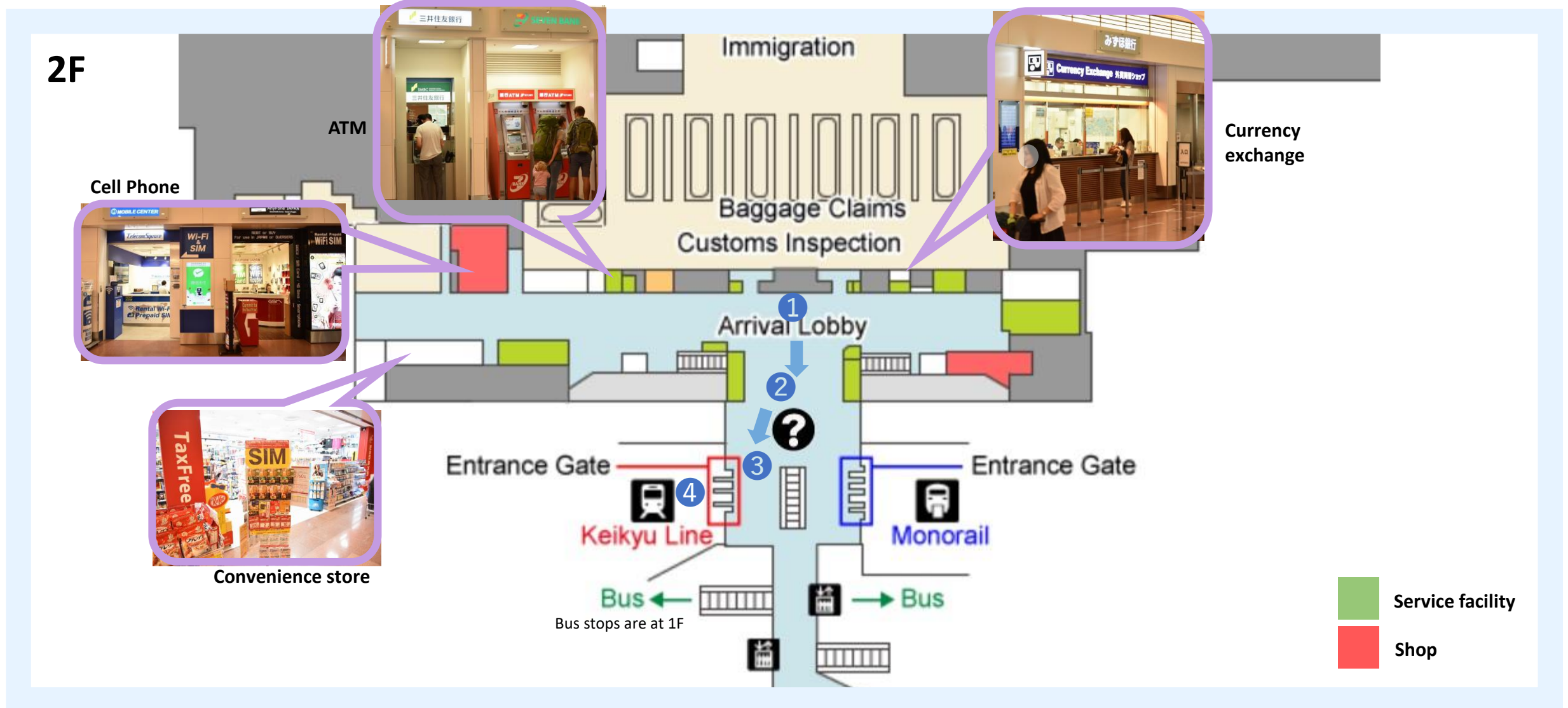




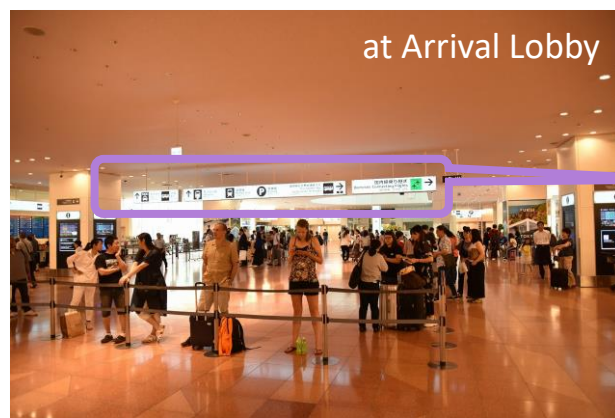
Haneda Airport International Terminal connects directly to the underground Haneda Airport International Terminal Station on the Keikyu Line. As a matter of convenience for you to purchase your train ticket, we recommend you to stop JR East Ticket Service Counter, where the assistants will help you with getting JR ticket in English, and to purchase the ticket for whole JR route. You have to get Keikyu route separately.

To
Nasu-
shiobara

羽田 空港国際ターミナル・京急線へのアクセス Access to Keikyu Line at International Terminal, Haneda Airport



1 Arrival Lobby



2 Airport Information Desk



3 Keikyu Information & Entrance

Get your ticket for JR Tokyo.
You are not able to purchase Shinkansen ticket here but do it at Tokyo Station.

Ticket machines stand by Information Counter



4 Platform of Keikyu Railway



Access to Keikyu Railway Entrance: <http://www.haneda-airport.jp/inter/access/train.html>



Haneda

京急線・羽田空港国際ターミナル駅から那須塩原駅へのアクセス

Access to **Nasushiobara** from **Kikyu Haneda Airport** International Terminal Station

To
Nasu-
shiobara

JR品川駅・東京駅経由by way of JR Shinagawa & Tokyo Station

Keikyu Line
International Terminal, Haneda Airport



Shinagawa, Keikyu



Transfer 10 min. to access to JR



If you have only Keikyu ticket for Shinagawa, you have to buy JR ticket for Tokyo here.

Shinagawa, JR



Platform is 1 or 3. Make sure if the train goes forward Tokyo/Ueno.



Tokyo, JR

Haneda Airport
International Terminal

Ticket to purchase:
For Tokyo, 580yen (Dec.2019)

Keikyu Line
Shinagawa, JR

JR Yamanote Line or
Keihin-Toho Line

Tokyo, JR
Ticket to purchase:
For Nasushiobara,
5,390yen* (Dec.2019)

*The price of the Shinkansen depends
on the type of train you board.

Toshoku/Hokkaido
Shinkansen

Nasushiobara,
Tohoku/Hokkaido Shinkansen



Tokyo, JR

Transfer to
Tohoku/
Hokkaido
Shinkansen
platform

10 min. to walk

Yamanote/Keihin-tohoku Line arrives at 3 or 4 Platform. Go to Shinkansen Entrance as following the sign. It should be 14 through 23 Platform.



If you couldn't have enough time to purchase Shinkansen ticket at airport,



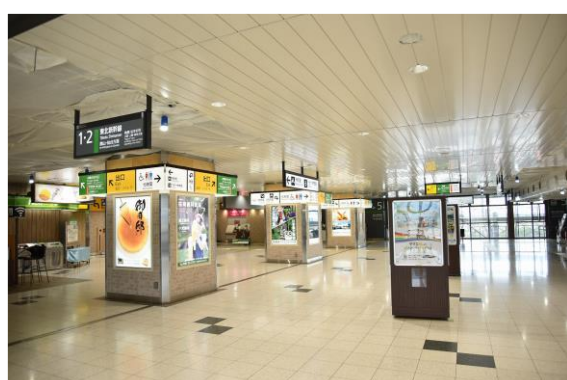
You are able to purchase Shinkansen tickets at any Shinkansen stations, such as Shinagawa, Tokyo, or Ueno. Ticket machines for Shinkansen are available for getting tickets. Also, you may ask the tickets in person at any Midori no Madoguchi, JR Ticket Service Counter.

Tohoku/Hokkaido Shinkansen entrance gate

Tokyo, JR Tohoku/Hokkaido Shinkansen



Nasushiobara, Tohoku/Hokkaido Shinkansen

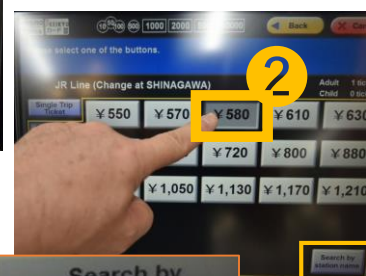


Outside of Nasushiobara Station East Exit

How to purchase a Keikyu ticket



Select **Change at Shinagawa JR Line** for your final destination such as Tokyo.



Select **Search by station name** when need to know how much the fare is for.



3 If you need a receipt, touch here!

4 Put a bill or coins into the slots.

5 Here it is. Get your ticket. Don't forget the change.

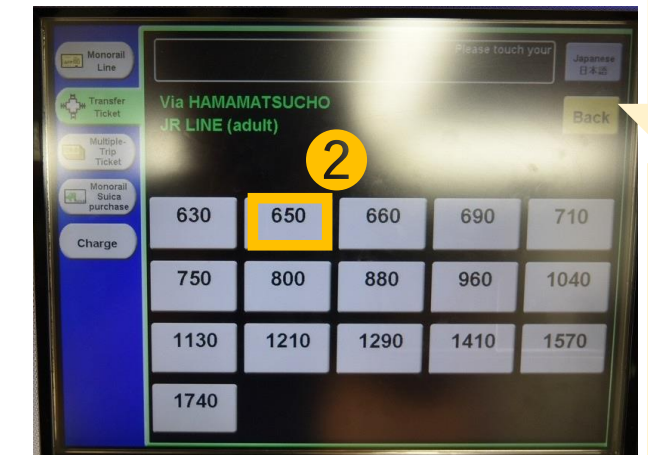
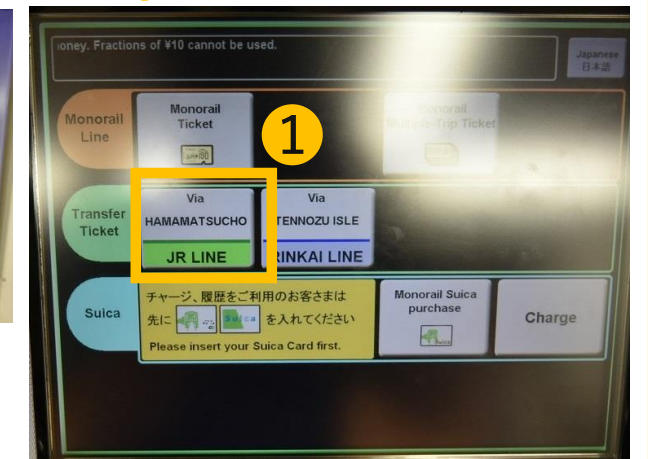


It is a sample ticket of Keikyu. It is **470yen** for JR Tokyo by way of Keikyu Shinagawa (Dec. 2019).



Keikyu Line shows ticket fare for each destination on a map and a list near ticket machines in both Japanese and English.

How to purchase a Tokyo Monorail ticket



It is a sample of Monorail ticket. It costs **650 yen** for JR Tokyo by way of Hamamatsucho Station (Dec. 2019).



Tokyo Monorail shows ticket fare for each destination on a map and a list near ticket machines in both Japanese and English.