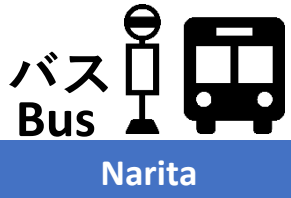


成田空港 バス乗り場へ



- 1. In Narita Airport, each terminal has the bus stop for Tsukuba. Find the one at your arrival terminal as seeing the direction followed.
- 2. Before standing in a waiting line at the bus stop, get your ticket first at ticket counter. It costs 2,300yen one way (Dec, 2019). Driver will ask you the ticket when you get into the bus.
- 3. Schedule panel above the ticket counter desk shows you the schedule, or see the site, <https://www.narita-airport.jp/en/access/bus>
- 4. Call or send a message to your host-researcher to notify what bus you are going to ride on at what time.
- 5. It generally takes about one hour from Narita Airport to Tsukuba Center (bus terminal).

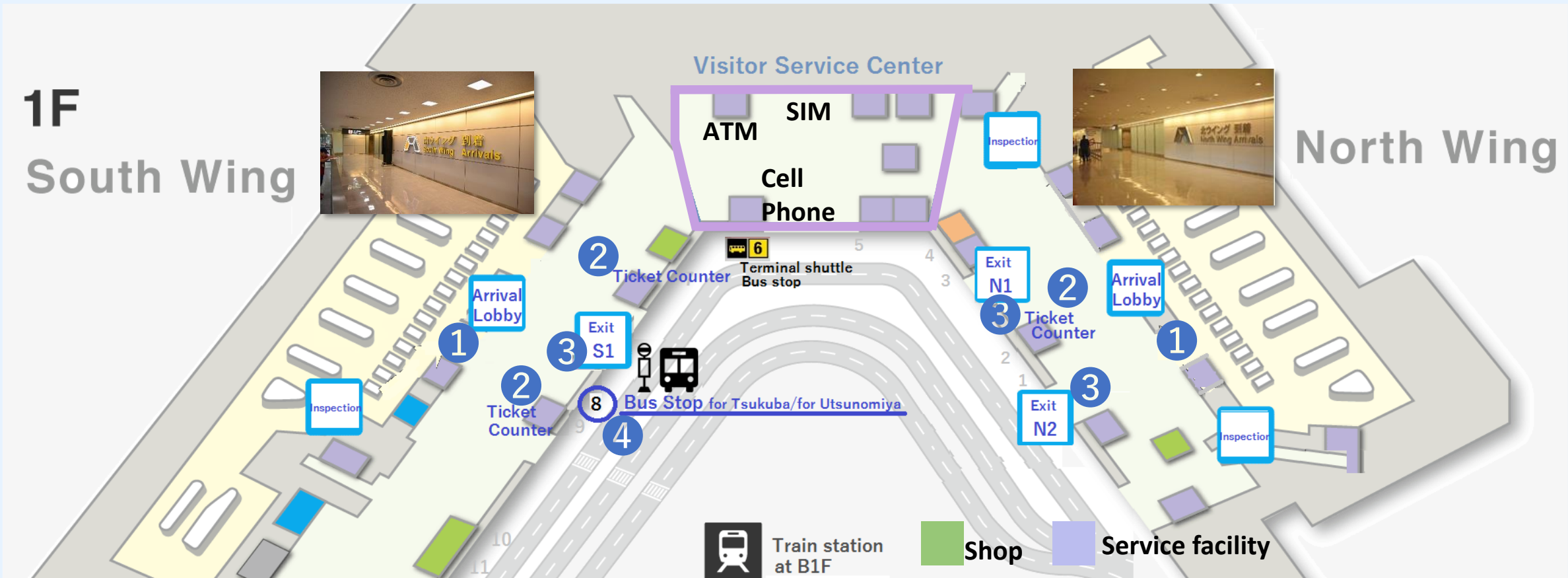
To Bus Stop at
Narita Airport
To
Tsukuba Center

ターミナル1

Terminal 1



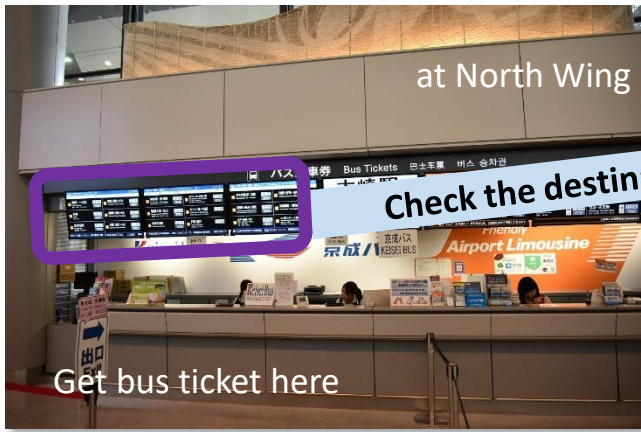
You will find ATM machines, prepaid SIMs, and cell phone rental shops at Visitor Service Center between North Wing and South Wing.



1 Arrival Lobby



2 Ticket Counter (Keisei)



3 Go out the lobby



Bus Tickets 巴士车票 出			
11:20	埼玉・茨城・栃木・群馬・福島エリア for Saitama・Utsunomiya・Tochigi・Gunma・Fukushima Area 05:30 06:30 07:30 08:30 09:30 10:30 11:30 12:30 13:30 14:30 15:30 16:30 17:30 18:30 19:30 20:30 21:30 22:30 23:30 24:30	11:20	11:20
11:40	さいたま新都心駅・大宮駅 Saitama新都心 Sta. & Omiya Sta.	12:05	川越駅・坂戸駅 (森林公園駅) Kawagoe Sta. & Sakado Sta. & Shinryoken Sta.
17:40	和光市駅・東新大塚駅・所沢駅 Wakoshi Sta. Higashi-Shinjuku Sta. & Toshima Sta.	15:35	鴻巣駅・熊谷駅 Konsu Sta. & Kumagaya Sta.
17:10	水戸・勝田・日立 Mito, Maebashi & Hitachi	14:00	つくばセンター・土浦駅 Tsukuba-center & Tsuchiura Sta.

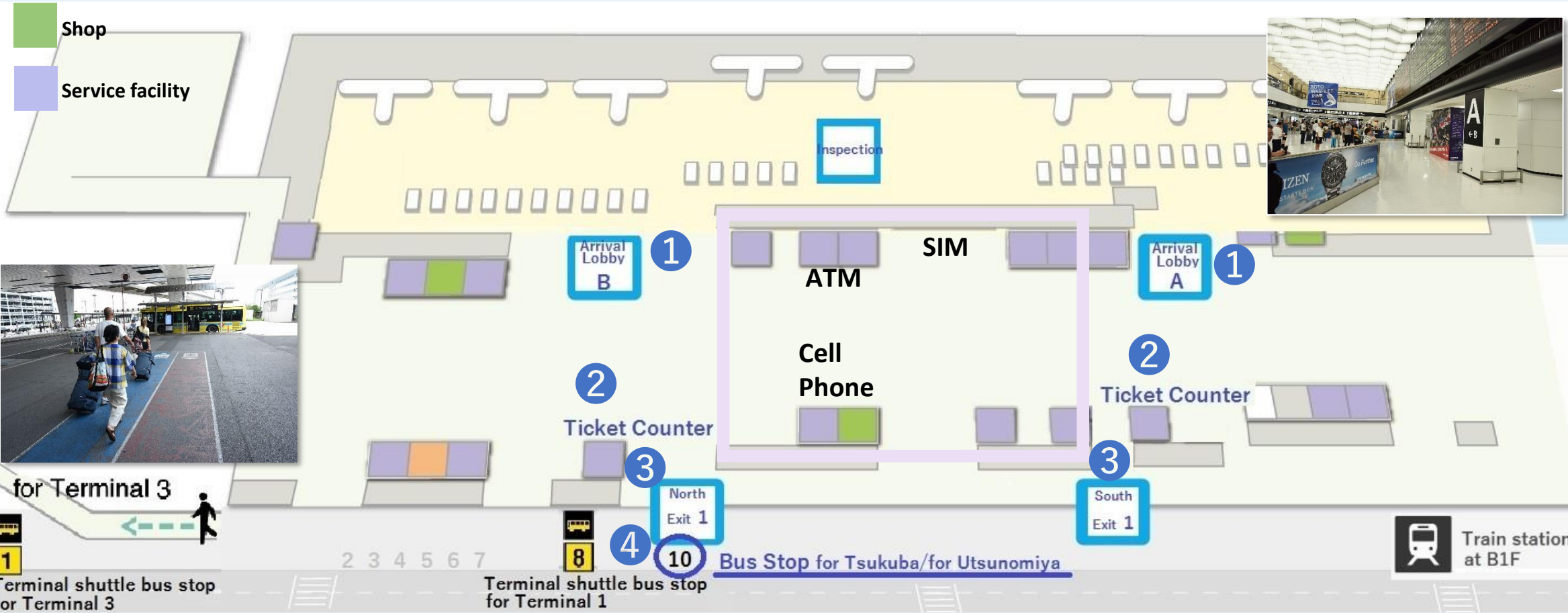


ターミナル2

Terminal 2

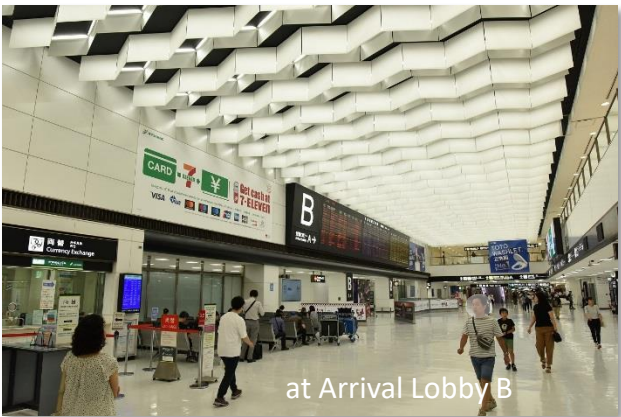


You will find ATM machines, prepaid SIMs, and cell phone rental shops between A and B Arrival Lobby.



1

Arrival Lobby



at Arrival Lobby B

2

Ticket Counter (Keisei)



Get bus ticket here



Exit to bus stops

3

Go out the lobby

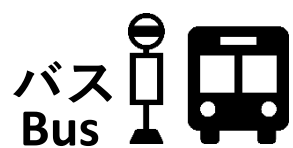
12:32			12:32		
さいたま新都心駅・大宮駅 Saitama Shintoshin Sta. & Omiya Sta.	13:00 14:00	川越駅・坂戸駅・鶴林公園駅 Kawagoe Sta. & Saitama Sta. & Tsurubuchi Sta.	13:20 15:00	本厚木駅・田村駅 Honkoyama Sta. & Tamura Sta.	14:55 16:45
和光市駅・東所沢駅・所沢駅 Wakoshi Sta. Higashi-Yokohama Sta. & Yokoze Sta.	15:30 16:20	鴻巣駅・熊谷駅 Kosugi Sta. & Kumagaya Sta.	15:50 17:05	相模大野駅・町田駅 Sagami-Ono Sta. & Machida Sta.	13:15 14:45
水戸・勝田・日立 Mito, Maebashi & Hitachi	13:55 15:25	つくばセンター・土浦駅 Tsukuba Center & Tsuruba Sta.	13:05 14:45	南町田駅 Minamimachida Sta.	13:15 14:45



4

Bus Stop for Tsukuba





成田空港 バス乗り場へ

to Bus Stop at Narita Airport

To Tsukuba Center

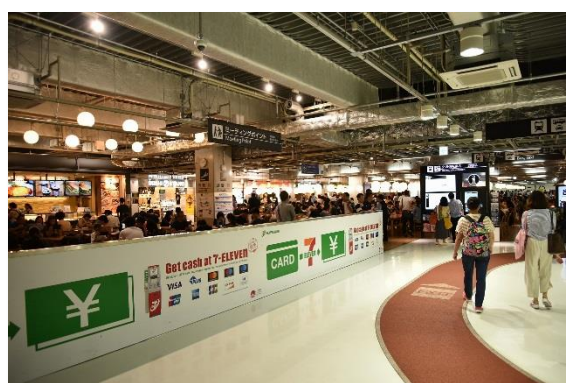
ターミナル3

Terminal 3



You will find cafes, currency exchange, ATM machines, and prepaid SIMs on your route to exit of Terminal 3.

1 Arrival Lobby



2 Ticket Counter (Keisei)



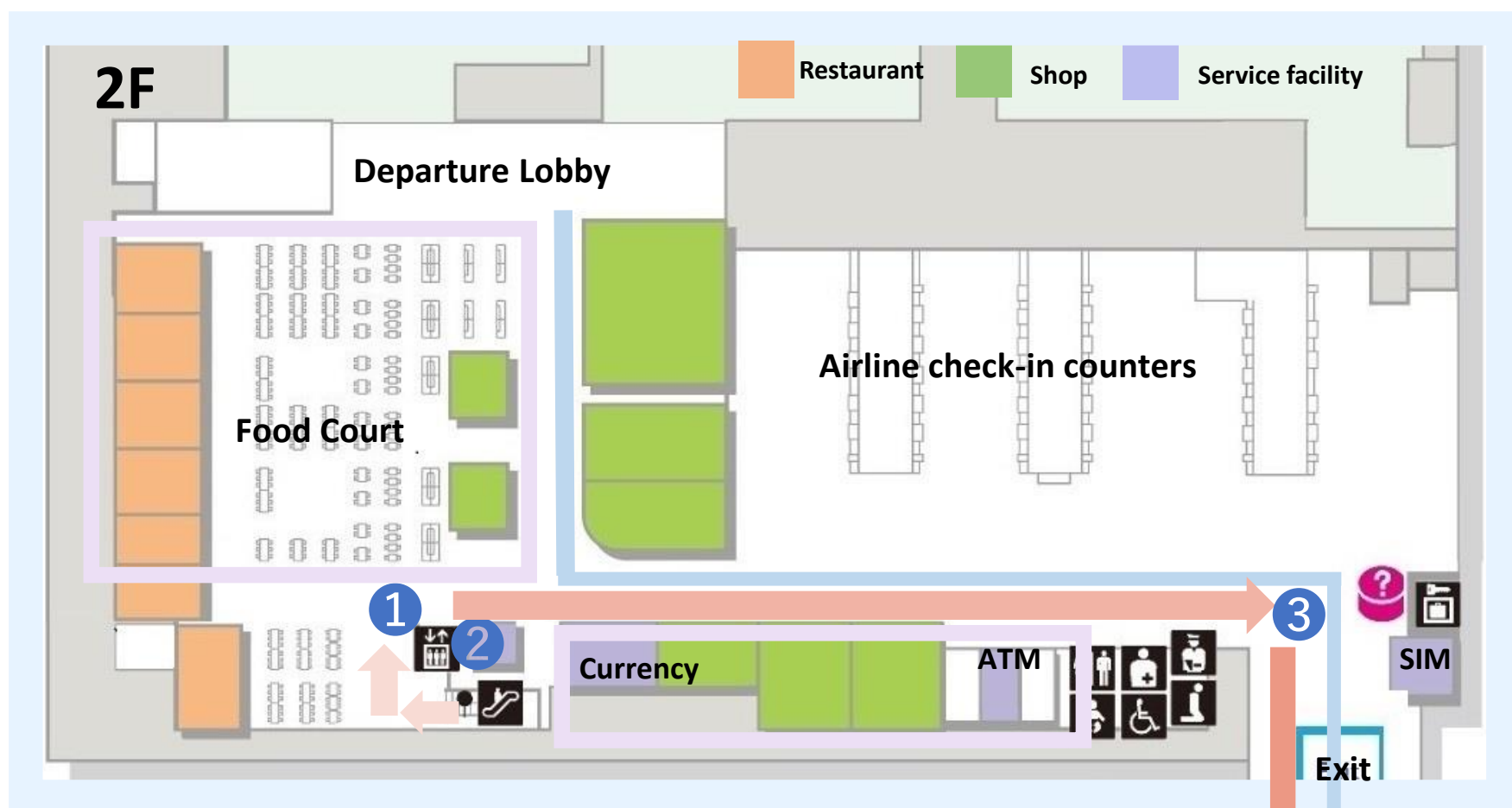
3 Go out terminal building

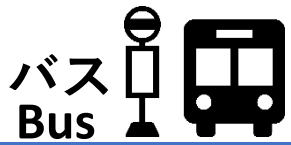


4 Down to 1F



5 Bus Stop for Tsukuba





Narita

成田空港からつくばセンターへのルート

Route to **Tsukuba Center** (bus terminal) from **Narita** Airport

To
**Tsukuba
Center**

Narita Airport
Terminal3



Narita Airport
Terminal2



Narita Airport
Terminal1



To Higashi-Kanto Express Road



Some buses leave express road at Ushiku-Ami IC to stop over Hitachino-Ushiku Station.



Tsukuba Center
(bus terminal)



You will be picked up here, or transfer to Tsuku-bus for Nohrin Danchi, or walk to JST Residence Hall.

