

BRAIN

– For early realization of “Society 5.0”
in agriculture, forestry, fisheries and food industry –



Overview

Bio-oriented Technology Research Advancement Institution (BRAIN) is a funding agency to promote research and development based on the relevant national strategies, including "Innovation Strategy for Agriculture, Forestry and Fisheries Research." BRAIN commissions R&D projects to universities, national colleges of technologies, national research institutions, private companies and other entities, providing funds and managing project executions. The agency aims for steadily leading research results to social implementation.

What are bio-oriented technologies?

Bio-oriented technologies are technologies that meet two requirements:

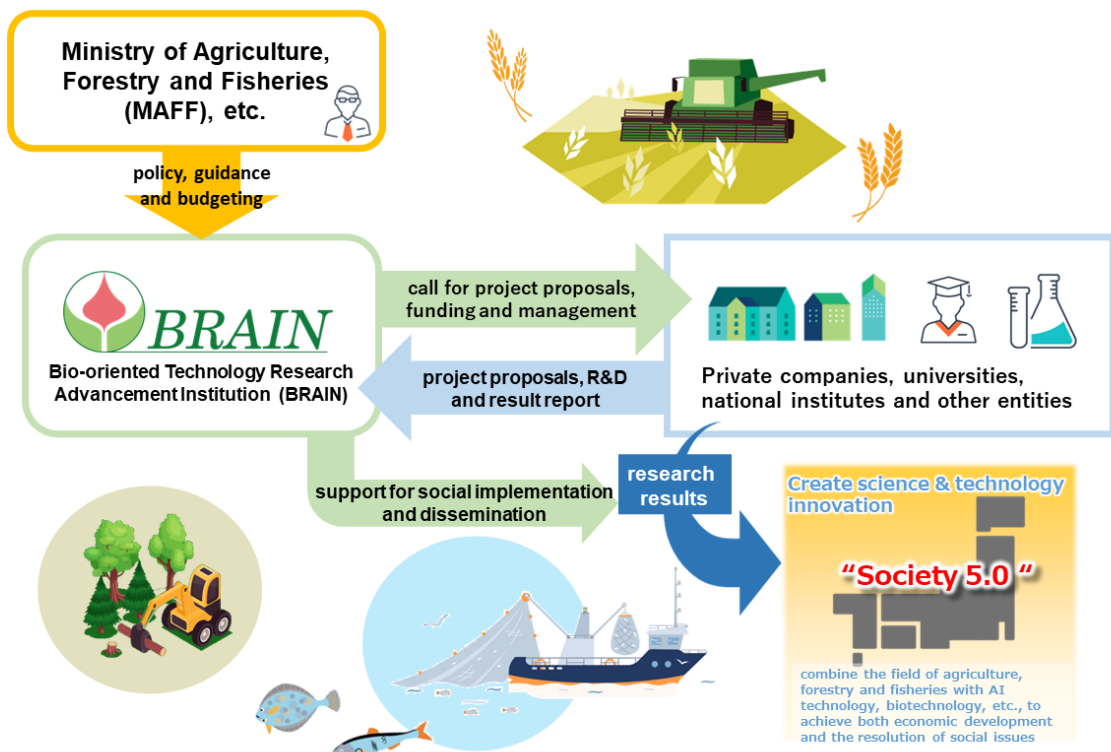
1) used in the industries dependent on the results of living organism and biological function such as agriculture, forestry and fisheries, food and beverage manufacturing industry and tobacco industry

2) require investigation and research closely related to the biological function

These technologies include biotechnologies, crop cultivation management, livestock breeding techniques, new materials for improving food processing techniques and mechatronics application.

Commissioning research project

BRAIN calls for excellent proposals in the fields of agriculture, forestry, fisheries and food industry from private companies, universities, national research institutions, etc. Providing research funds and supporting project management to achieve goals, the agency promotes the social implementation of the research results.



Research Programs

Moonshot R&D Program for Agriculture, Forestry and Fisheries

BRAIN aims to create disruptive innovation originating in Japan and promotes challenging research and development efforts based on bolder ideas that are not an extension of conventional technology ("Moonshot"). The agency is conducting research and development projects aimed at achieving Moonshot Goal 5 i.e. "Creation of the industry that enables sustainable global food supply by exploiting unused biological resources by 2050."

Cross-ministerial Strategic Innovation Promotion Program (SIP)

The Council for Science, Technology and Innovation allocates budgets beyond the boundaries of ministries and fields and promotes efforts from basic research to practical application or commercialization. BRAIN supports the operation of SIP as a research promotion agency in charge of the task of "Building a sustainable food chain that provides abundant and nutritious food" in the SIP (Phase 3) R&D plan.

Research and implementation promotion program through open innovation

BRAIN promotes fundamental research for creating innovative research seeds as well as R&D at the practical stage for social implementation of the results of such fundamental research, etc. The agency strives to create innovations that contribute to the promotion of important national policies and the resolution of on-site issues, and it accelerates social implementation of such innovations in the fields of agriculture, forestry, fisheries and food, where industry, academia and government work together.

Startup Supporting Program (supporting SBIR(Small/Startup Business Innovation Research))

In order to solve policy and social issues in the fields of agriculture, forestry, fisheries and food, BRAIN provides step-by-step support for start-ups aiming for creating new businesses. Involving accompaniment by program managers with extensive experience in commercialization, BRAIN assists start-ups for establishing technology seeds and proof of concept or conducting feasibility studies and research and development for commercialization including technical improvements.

Development and improvement program of strategic smart agricultural technology

BRAIN promotes the development and improvement of agricultural technology for accelerating the smartification at production sites, targeting items and fields where such technologies and equipment are still insufficient. It also supports efforts such as the development of cultivation technologies which will contribute to the expansion of exports.

Research project results

The research results obtained in the previous projects are introduced in an easy-to-understand manner.

<https://www.naro.go.jp/laboratory/brain/english/press/stories/index.html>



History

1986	BRAIN established in Tokyo and starts its research promotion programs (investment and financing) for private sectors
1996	Fundamental research programs (commissioning research projects) initiated
2003	Incorporated into Agriculture Research Organization (ARO)
2006	Incorporated into National Agriculture and Food Research Organization (NARO)
2011	Tokyo office closed and relocated and integrated into Saitama City office
2016	Restructured as an agency specifically responsible for research funding in the NARO organization
2018	Relocated to Kawasaki City

Contact

Bio-oriented Technology Research Advancement Institution (BRAIN)

16th floor, Parale Mitsui Building ,
8 Higashida, Kawasaki, Kanagawa 210-0005, Japan

Phone : +81 44 276 8610

Fax: : +81 44 276 9143

E-mail : brainki1@ml.affrc.go.jp

